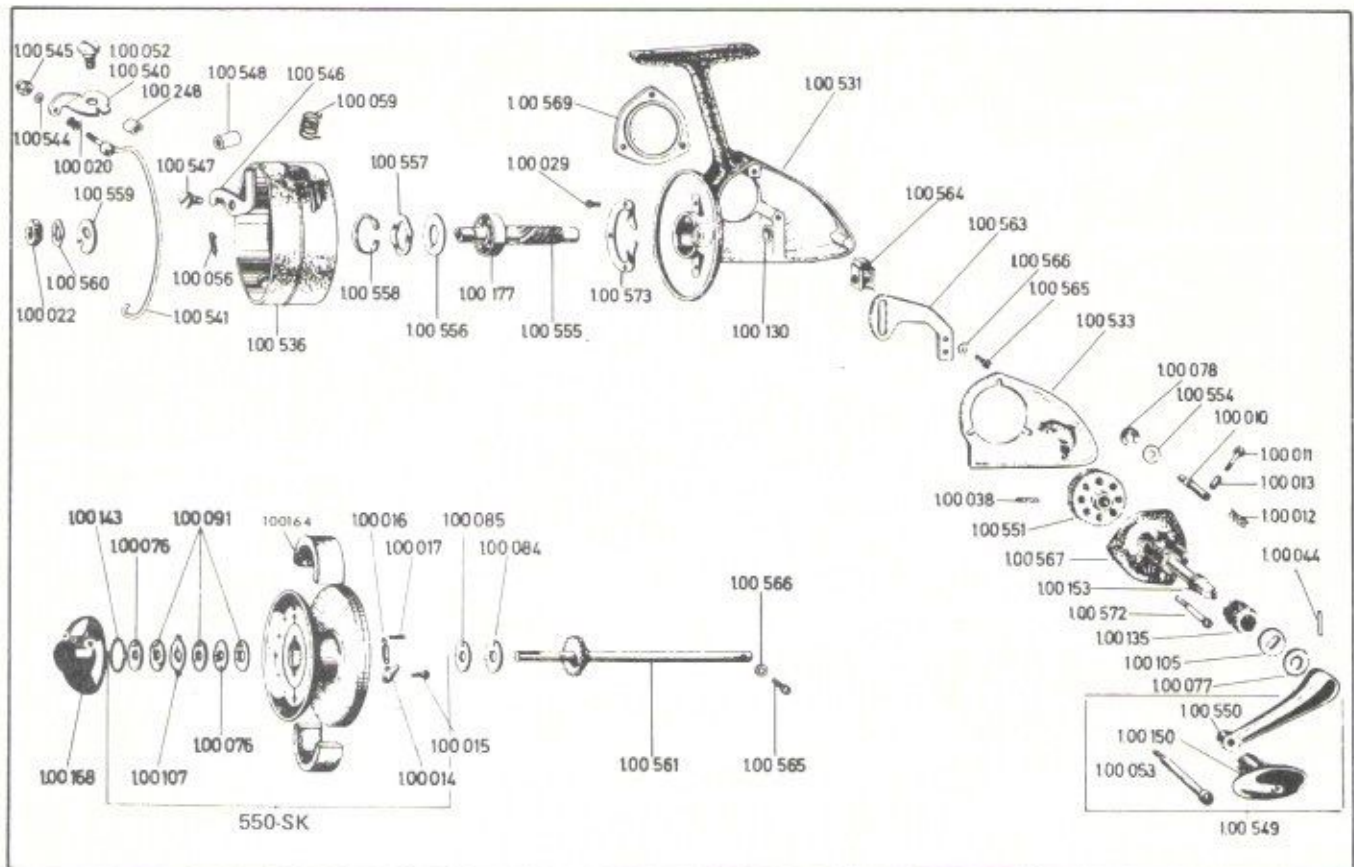


620 TERMINAL WAY • P. O. BOX 938 • COSTA MESA, CALIFORNIA 92627 • (714) 642-1163



IMPORTANT: AN "N" SERIES QUICK SPOOL WILL NOT FIT THIS REEL

QTY	PART NO.	DESCRIPTION	LIST PRICE	PART NO.	DESCRIPTION	LIST PRICE	QTY
	100-010	Anti-reverse pin	.55	100-248	Rubber buffer	.25	
	100-011	Ball lever	.45	100-531	Housing	5.60	
	100-012	Spring	.25	100-533	Housing cover	.80	
	100-013	Plastic tubing	.25	100-536	Rotating head	5.60	
	100-014	Click tongue	.30	100-540	Angle lever	1.05	
	100-015	Pin	.25	100-541	Bail	2.35	
	100-016	Spring	.30	100-544	Lock washer	.35	
	100-020	Line guide	3.00	100-545	Hexagon nut	.35	
	100-022	Hexagon nut	.35	100-546	Trip lever	.65	
	100-029	Screw for brake ring	.25	100-547	Lug screw	.30	
	100-038	Pin for drive gear	.30	100-548	Rubber buffer	.25	
	100-044	Pin for crank arm	.30	100-549	Crank arm complete	2.70	
	100-052	Bearing screw	.50	100-550	Crank arm	1.90	
	100-053	Grip screw	.80	100-551	Drive gear	2.40	
	100-056	Spring	.30	100-554	Washer*	.25	
	100-059	Bail spring	.40	100-555	Drive shaft	2.65	
	100-076	Tongue washer	.30	100-556	Packing washer	.25	
	100-077	Washer	.30	100-557	Spring washer	.30	
	100-078	Safety clip	.25	100-558	Snap ring	.30	
	100-084	Washer (metal)	.25	100-559	Drive plate	.30	
	100-085	Washer (resitex)	.25	100-560	Spring washer	.30	
	100-091	Washer (resitex)	.25	100-561	Axle, complete	2.40	
	100-105	Slotted washer	.30	100-563	Slide	.75	
	100-107	Drive plate	.30	100-564	Connecting piece	.50	
	100-130	Bushing	.45	100-565	Screw for slide	.25	
	100-135	Crank nut	.60	100-566	Lock washer	.25	
	100-143	Snap ring	.25	100-567	Bearing cover	2.45	
	100-150	Handle grip	.50	100-569	Plate cover	1.55	
	100-153	Drive axle	1.70	100-572	Screw for bearing cover	.30	
	100-164	Cork ring (2 halves)	.40	100-573	Brake ring	.85	
	100-168	Drag nut	2.45	550-SK	Spool, complete	8.50	
	100-177	Ball bearing	3.40		*Use 100-098	.30	